

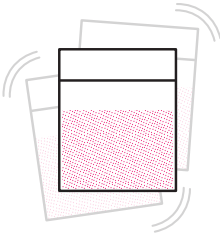
1 Test Prep

IMPORTANT!

For Powder:

Thoroughly shake the bag.

For Pills: Crush pill inside bag and shake.

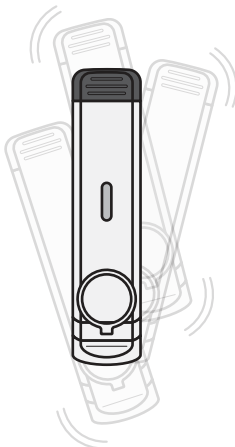


⚠ WARNING

- Ensure there are no lines visible in the result window.
- Do not use the device to crush pills.
- Device contains water. **Keep upright.**

4 Shake

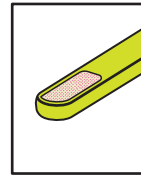
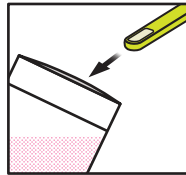
Shake the device vigorously for **at least 5 seconds** to thoroughly mix the substance.



2 Remove & Collect



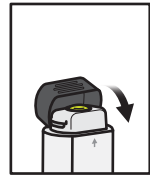
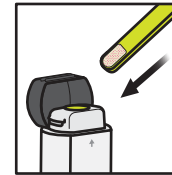
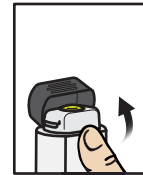
Remove scoop from back of device. Collect a sample ensuring that the scoop is full and **leveled off**.



3 Insert Filled Scoop

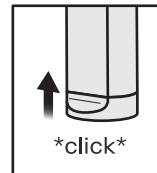
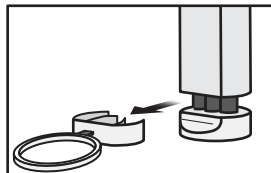
Push lid open and fully insert the scoop into the device.

Leave scoop inserted and close lid. You should hear a click when device is properly closed.



5 Remove & Push

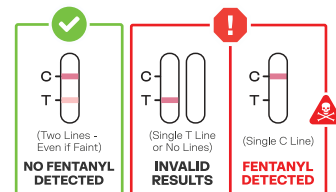
While keeping the device vertical, remove the ring pin and **push the base upwards** until you hear a click and it stays.



6 Place Vertically

Place device upright on a flat surface and wait **3 minutes** for test result.

NOTE: Results are valid after 3 minutes, invalid after 15 minutes.



FENTANYL DETECTED?

Report a positive. See reverse side.

